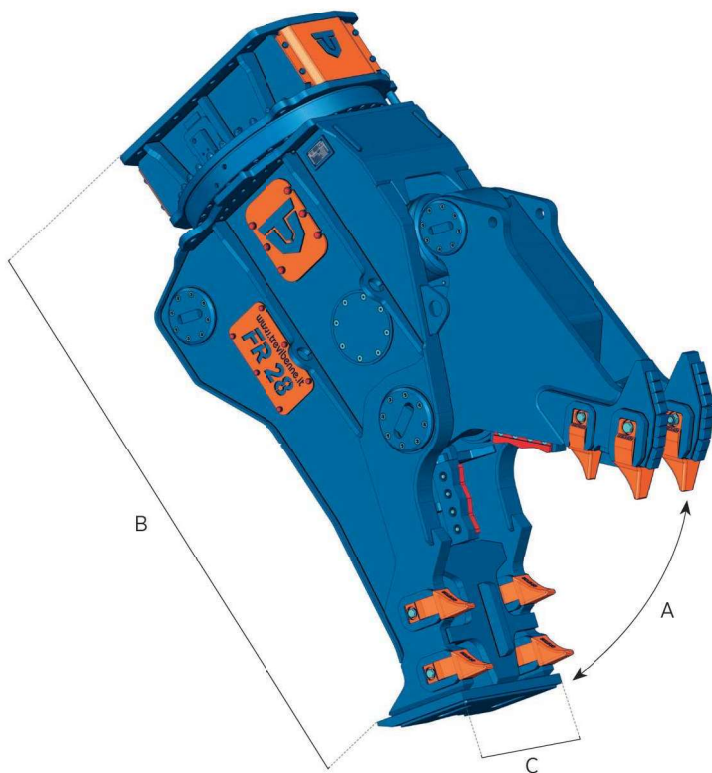




# FR SERIES

- ROTATING PULVERIZER
- FRANTUMATORE GIREVOLE
- BROYEUR ROTATIF
- DEMOLEDOR ROTATIVO
- DREHBARE PULVERISIERER



NEW PRODUCT

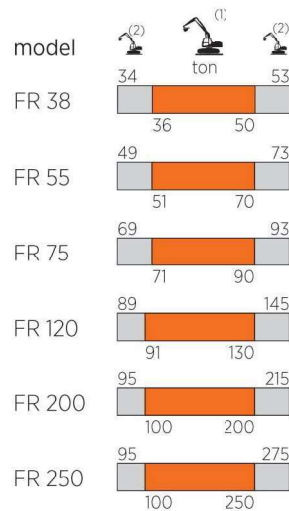
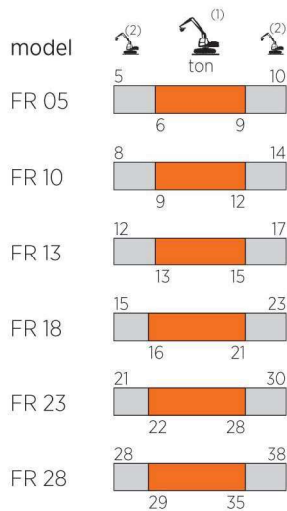
NEW PRODUCT

NEW PRODUCT

NEW PRODUCT

		FR 05	FR 10	FR 13	FR 18	FR 23	FR 28	FR 38
kg	kg.	555	1050	1400	1900	2340	3200	3810
A	mm.	560	650	700	780	880	930	1005
B	mm.	1460	1835	1925	2185	2305	2470	2620
C	mm.	335	370	400	480	540	615	695
	mm.	140	150	150	200	200	260	260
	mm.	20	25	30	35	40	45	50
	bar	320	320	350	350	350	350	350
	l/min.	80 / 100	90 / 120	100 / 150	120 / 200	150 / 250	250 / 350	300 / 400
	bar	140	140	140	140	140	140	140
	l/min.	5	50*	50*	50*	50*	25 / 50*	25 / 50*
		/	/	/	/	/	/	/

\*Double motor / \*Doppio motore / \*\*Double moteur / \*Doble motor / \*Doppelmotor



- (1) Optimum excavator-equipment combination  
Accoppiamento escavatore-attrezzatura ottimale  
Couplage pelle-équipement optimal  
Acoplamiento excavadora-implimento optimal  
Optimale Bagger-Ausrüstung Kombination
- (2) Possible excavator-equipment combination  
Accoppiamento escavatore-attrezzatura possibile  
Couplage pelle-équipement possible  
Acoplamiento excavadora-implimento posible  
Mögliche Bagger-Ausrüstung Kombination

		FR 55	FR 75	FR 120	FR 200	FR 250
kg.	kg.	5850	8100	13100	22300	24640
A	mm.	1120	1440	1655	1900	2050
B	mm.	2995	3255	3865	4480	5140
C	mm.	735	800	920	1400	1400
	mm.	260	325	400	500	500
Ø max	mm.	60	75	90	100	110
max	bar	350	350	350	350	350
	l/min.	400 / 500	450 / 600	500 / 800	900 / 1200	900 / 1200
max	bar	140	140	140	250	250
	l/min.	25 / 50*	70*	80*	80*	80*
		√	√	√	√	√

\*Double motor / \*Doppio motore / \*Double moteur / \*Doble motor / \*Doppelmotor



**HARDOX®**  
WEAR PLATE



**HARDOX®**  
IN MY BODY