



TABLE OF CONTENTS

HMG PRO

HMG PRO 3kW

HMG PRO 6-10kW

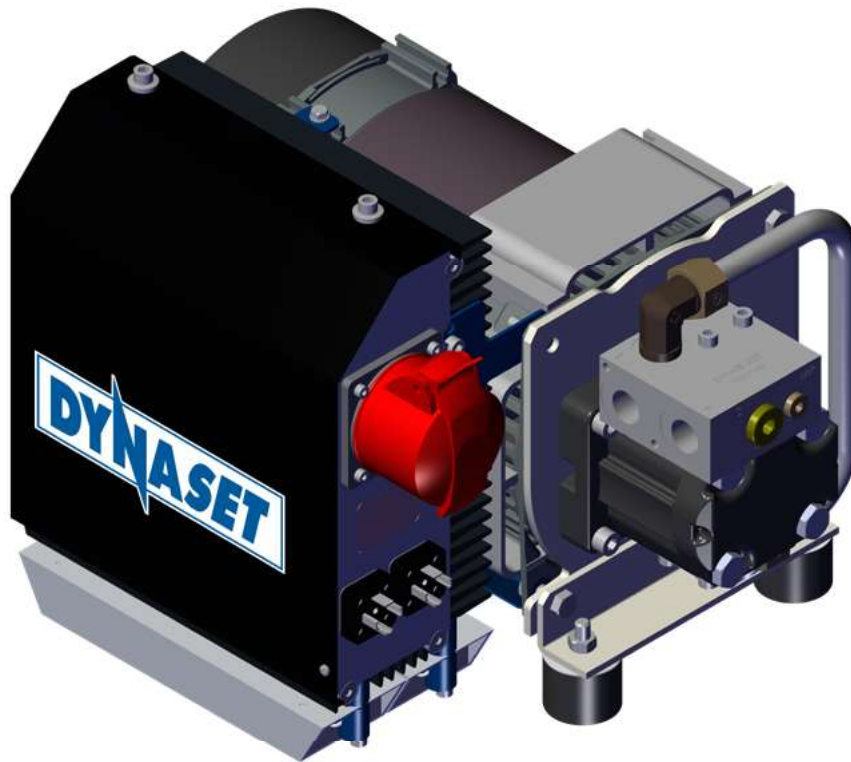
HMG PRO 12kW

HMG PRO 15-20kW

HMG PRO 30-40kW

DATA SHEETS
HMG PRO HYDRAULIC MAGNET GENERATORS





12/18
rev 1.4

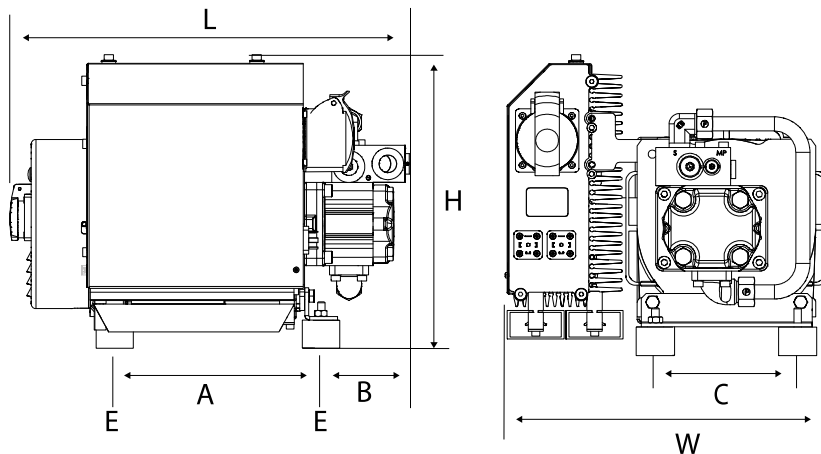
DATA SHEET

HMG/CMG PRO HYDRAULIC MAGNET GENERATOR



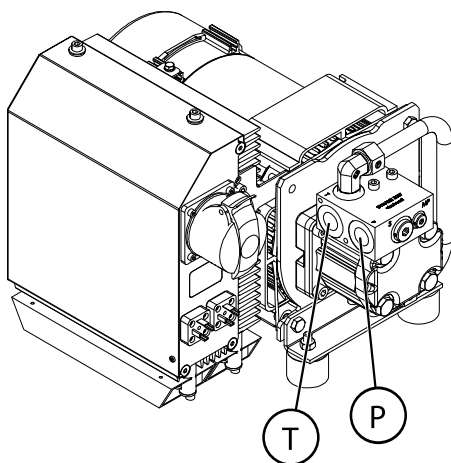
HMG PRO 3kW-220VDC-21

DIMENSIONS



MODEL	DIMENSIONS, mm (in)							WEIGHT
	L	W	H	A	B	C	E	kg (lbs)
HMG PRO 3kW-220VDC-21	431 (17.0)	337 (13.3)	317 (12.5)	223 (8.8)	96 (3.8)	150 (5.9)	M8	34 (75)
CMG PRO 3kW-220VDC-21	491 (19.3)	337 (13.3)	300 (11.8)	223 (8.8)	156 (6.1)	150 (5.9)	M8	34 (75)

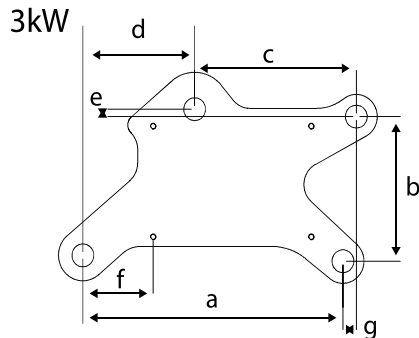
Notice! Measurements may change if optional accessories are installed.



HYDRAULIC PORTS

MODEL	PRESSURE LINE	RETURN LINE
	P	T
HMG PRO 3kW-220VDC-21	BSP 1/2"	BSP 1/2"
CMG PRO 3kW-220VDC-21	BSP 1/2"	BSP 1/2"

CMG ATTACHMENT PLATE (IF INCLUDED)



DIMENSIONS, mm (in)						
a	b	c	d	e	f	g
370 (14.57)	196 (7.72)	230 (9.06)	159 (6.26)	10 (0.39)	100 (3.94)	19 (0.75)

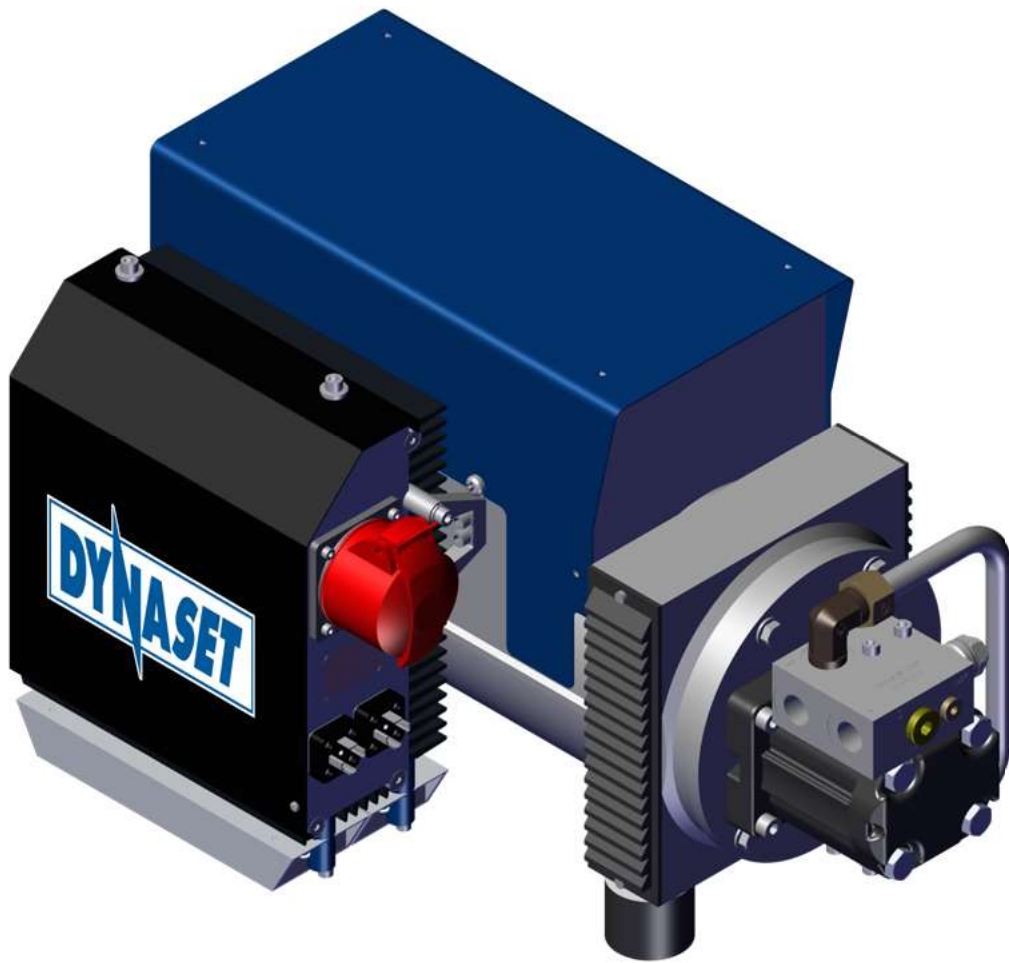
TECHNICAL SPECIFICATIONS

		HMG/CMG PRO 3kW-220VDC-21	
OUTPUT CHARACTERISTICS			
Generator power max.	kW	3	
Magnet coil power max.	kW	0,5 - 3	
Magnet coil resistance (20 °C)	Ohm	15 - 100	
Operating voltage	VDC	220±5%	
Auxiliary electricity		Optional	
Operating control voltage	VDC	6 - 32*	
HYDRAULIC POWER REQUIREMENTS		HMG	CMG
Flow min.	l/min (gpm)	23 (6.1)	23 (6.1)
Flow max.	l/min (gpm)	37 (9.8)	Flow limited internally
Pressure at nominal power output	bar (psi)	210 (3000)	210 (3000)
Pressure max.	bar (psi)	210 (3000)	350 (5100)
Pressure when unloaded	bar (psi)	50 (730)	50 (730)
Return line pressure max.	bar (psi)	5 (73)	5 (73)
HYDRAULIC FLUID REQUIREMENTS			
Viscosity	cSt	10-200 / optimum 25-35	
Temperature	°C (°F)	max. 70 (158)**	
Filter ratio	um	25 or better	
Cooling capacity requirements	kW	1,2	

Gallons are U.S. liquid gallons

* Only with HMG PRO

** Depending on the hydraulic fluid.



12/18
rev 1.3

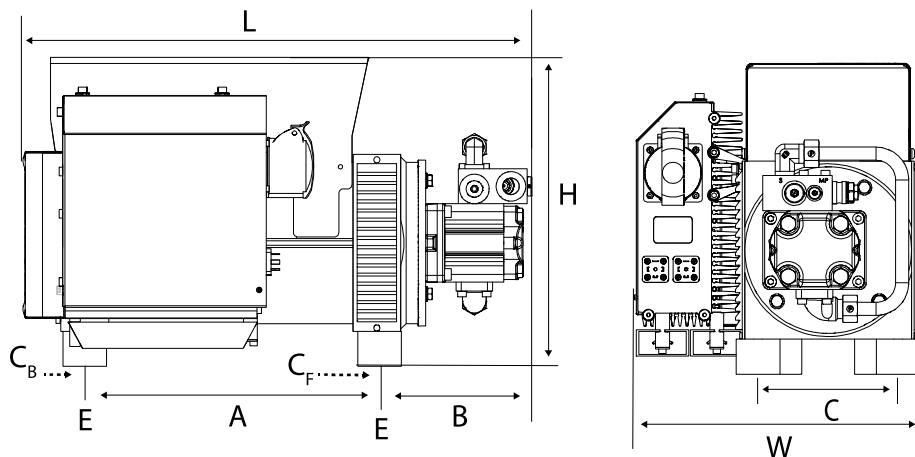
DATA SHEET

HMG/CMG PRO HYDRAULIC MAGNET GENERATOR



HMG/CMG PRO 6kW-220VDC-34
HMG/CMG PRO 10kW-220VDC-49

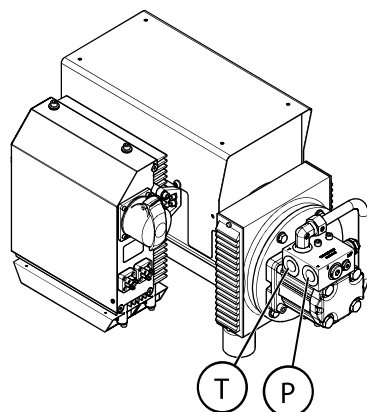
DIMENSIONS



MODEL	DIMENSIONS, mm (in)							WEIGHT	
	L	W	H	A	B	C _F	C _B	E	kg (lbs)
HMG PRO 6kW-220VDC-34	526 (20.7)	326 (12.9)	351 (13.9)	283 (11.1)	178 (7.0)	160 (6.3)	110 (4.3)	M8	58 (128)
CMG PRO 6kW-220VDC-34	598 (23.5)	326 (12.9)	337 (13.2)	283 (11.1)	239 (9.4)	160 (6.3)	110 (4.3)	M8	58 (128)
HMG PRO 10kW-220VDC-49	582 (23.0)	325 (12.8)	355 (14.0)	338 (13.3)	175 (6.9)	160 (6.3)	110 (4.3)	M8	60 (132)
CMG PRO 10kW-220VDC-49	655 (25.8)	325 (12.8)	325 (12.8)	338 (13.3)	234 (9.2)	160 (6.3)	110 (4.3)	M8	60 (132)

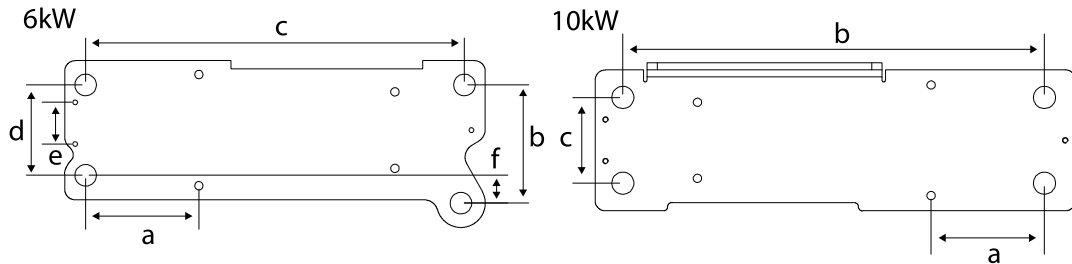
Notice! Measurements may change if optional accessories are installed.

HYDRAULIC PORTS



MODEL	PRESSURE LINE	RETURN LINE
	P	T
HMG/CMG PRO 6kW-220VDC-34	BSP 1/2"	BSP 1/2"
HMG/CMG PRO 10kW-220VDC-49	BSP 1/2"	BSP 1/2"

CMG ATTACHMENT PLATE (IF INCLUDED)



MODEL	DIMENSIONS, mm (in)					
	a	b	c	d	e	f
CMG PRO 6kW-220VDC-34	163 (6.42)	170 (6.69)	540 (21.26)	130 (6.26)	60 (2.36)	40 (1.57)
CMG PRO 10kW-220VDC-49	164 (6.42)	610 (24.02)	124 (4.88)	-	-	-

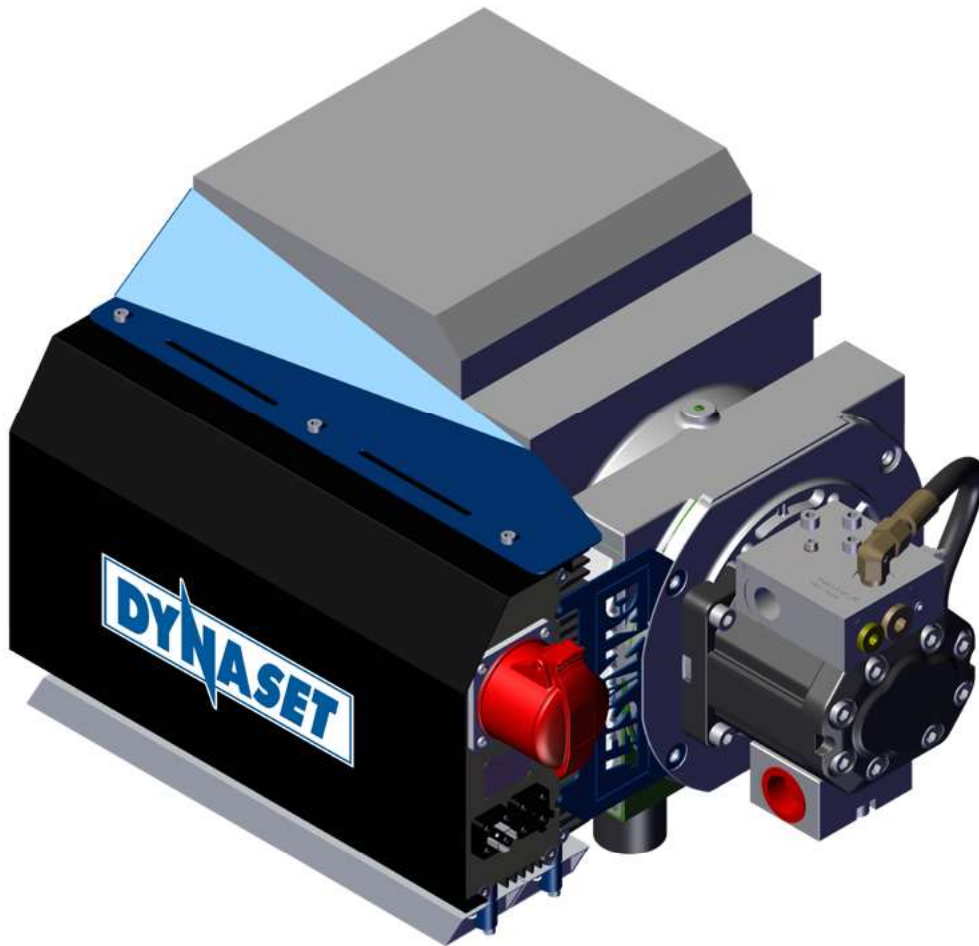
TECHNICAL SPECIFICATIONS

		HMG/CMG PRO 6kW-220VDC-34	HMG/CMG PRO 10kW-220VDC-49		
OUTPUT CHARACTERISTICS					
Generator power max.	kW	6	10		
Magnet coil power max.	KW	0,5 - 5,5	1,0 - 9,1		
Magnet coil resistance (20 °C)	Ohm	8,8 - 100	5,4 - 100		
Operating voltage	VDC	220±5%			
Auxiliary electricity		Optional			
Operating control voltage	VDC	6 - 32*			
HYDRAULIC POWER REQUIREMENTS		HMG PRO	CMG PRO	HMG PRO	CMG PRO
Flow min.	l/min (gpm)	37 (9.8)	37 (9.8)	53 (14.0)	53 (14.0)
Flow max.	l/min (gpm)	53 (14.0)	Flow limited internally	68 (18.0)	Flow limited internally
Pressure at nominal power output	bar (psi)	160 (2300)	160 (2300)	200 (2900)	200 (2900)
Pressure max.	bar (psi)	210 (3000)	350 (5100)	350 (5100)	350 (5100)
Pressure when unloaded	bar (psi)	50 (730)	50 (730)	50 (730)	50 (730)
Return line pressure max.	bar (psi)	5 (73)	5 (73)	5 (73)	5 (73)
HYDRAULIC FLUID REQUIREMENTS					
Viscosity	cSt	10-200 / optimum 25-35			
Temperature	°C (°F)	max. 70 (158)**			
Filter ratio	um	25 or better			
Cooling capacity requirements	kW	2,1		2,8	

Gallons are U.S. liquid gallons

* Only with HMG PRO

** Depending on the hydraulic fluid.



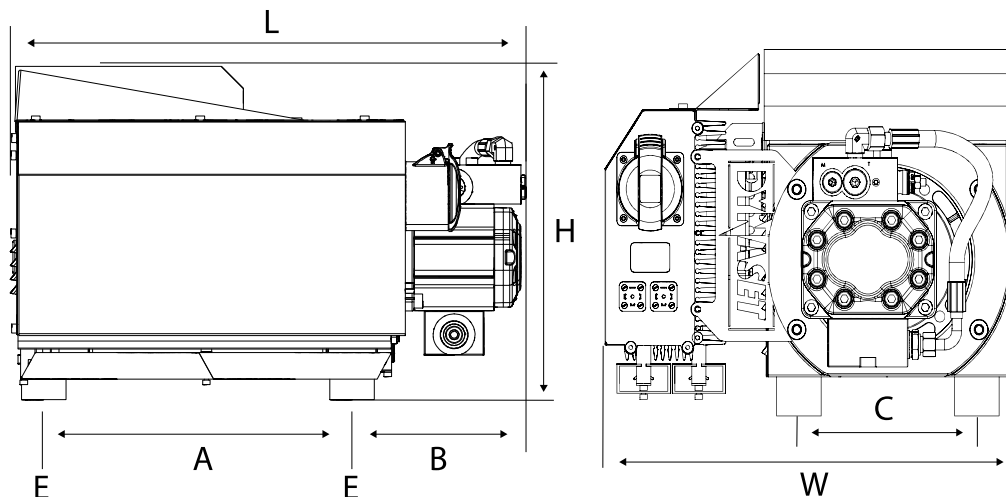
12/18
rev 1.3

DATA SHEET
HMG/CMG PRO HYDRAULIC MAGNET GENERATOR



HMG/CMG PRO 12kW-220VDC-59

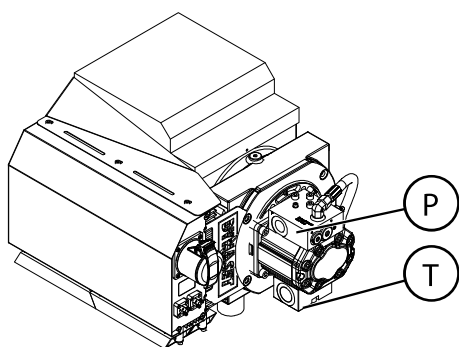
DIMENSIONS



MODEL	DIMENSIONS, mm (in)							WEIGHT
	L	W	H	A	B	C	E	kg (lbs)
HMG/CMG PRO 12kW-220VDC-59	580 (22.8)	460 (18.1)	375 (14.8)	347 (13.7)	196 (7.7)	200 (7.8)	Ø12 (0.5)	100 (220)

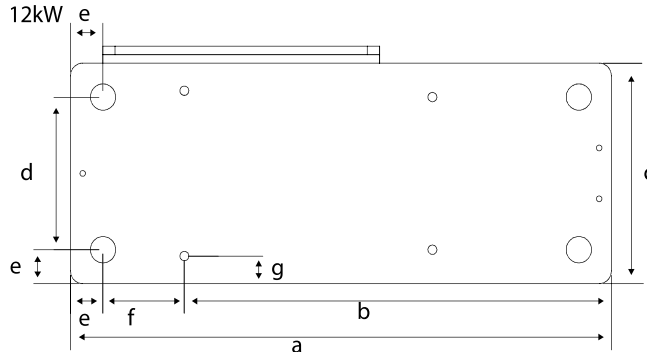
Notice! Measurements may change if optional accessories are installed.

HYDRAULIC PORTS



MODEL	PRESSURE LINE	RETURN LINE
HMG/CMG PRO 12kW-220VDC-59	P BSB 3/4"	T BSB 1"

CMG ATTACHMENT PLATE (IF INCLUDED)



MODEL	DIMENSIONS, mm (in)						
	a	b	c	d	e	f	g
HMG/CMG PRO 12kW-220VDC-59	665 (26.18)	305 (12.01)	260 (10.24)	180 (7.09)	40 (1.57)	100 (3.94)	32,5 (1.28)

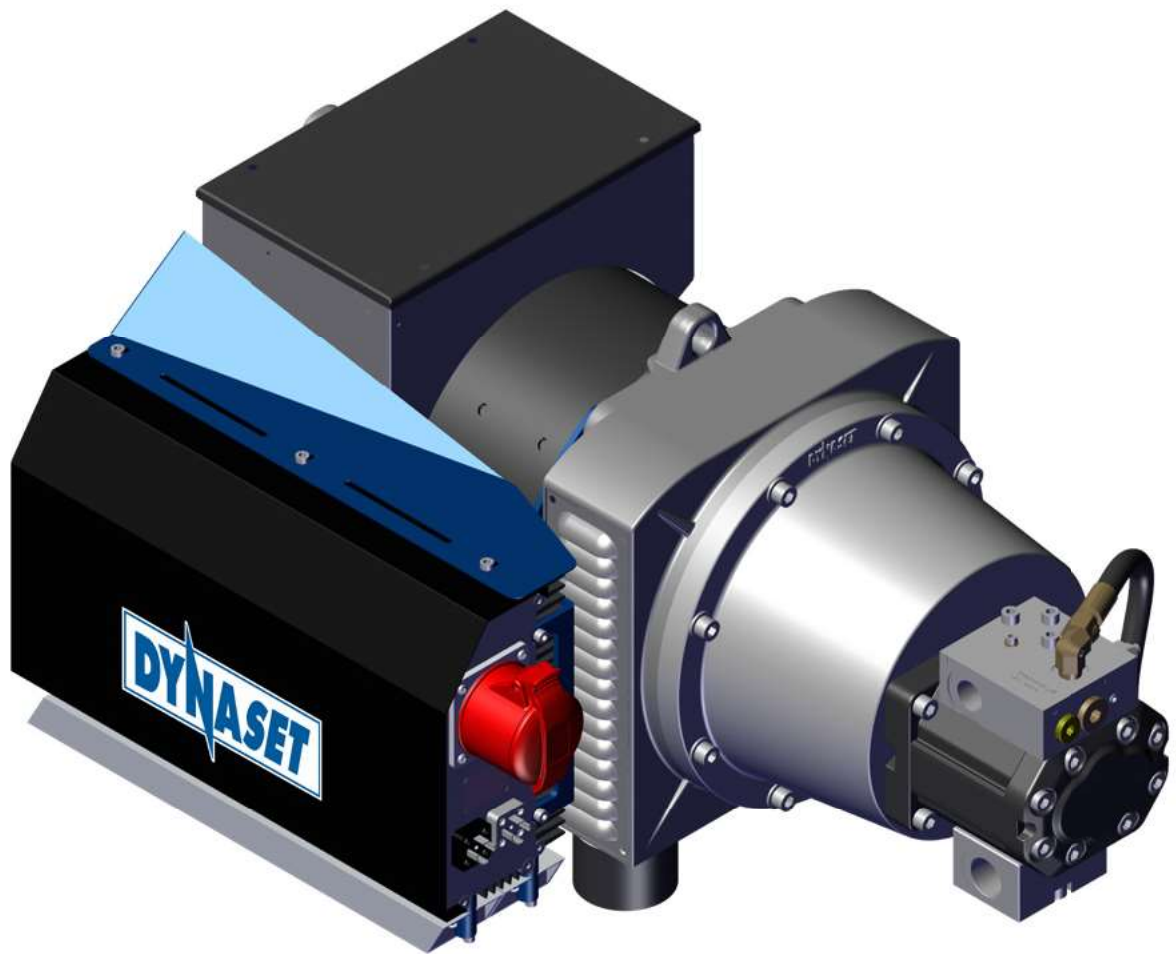
TECHNICAL SPECIFICATIONS

		HMG/CMG PRO 12kW-220VDC-59	
OUTPUT CHARACTERISTICS			
Generator power max.	kW	12	
Magnet coil power max.	kW	1,0 - 11	
Magnet coil resistance (20 °C)	Ohm	4,5 - 50	
Operating voltage	VDC	220 ± 5%	
Auxiliary electricity		Optional	
Operating control voltage	VDC	6 - 32*	
HYDRAULIC POWER REQUIREMENTS		HMG PRO	CMG PRO
Flow min.	l/min (gpm)	63 (16.6)	63 (16.6)
Flow max.	l/min (gpm)	77 (20.3)	Flow limited internally
Pressure at nominal power output	bar (psi)	200 (2900)	200 (2900)
Pressure max.	bar (psi)	210 (3000)	350 (5100)
Pressure when unloaded	bar (psi)	40 (580)	40 (580)
Return line pressure max.	bar (psi)	5 (73)	5 (73)
HYDRAULIC FLUID REQUIREMENTS			
Viscosity	cSt	10-200 / optimum 25-35	
Temperature	°C (°F)	max. 70 (158)**	
Filter ratio	um	25 or better	
Cooling capacity requirements	kW	3,2	

Gallons are U.S. liquid gallons

* Only with HMG PRO

** Depending on the hydraulic fluid.



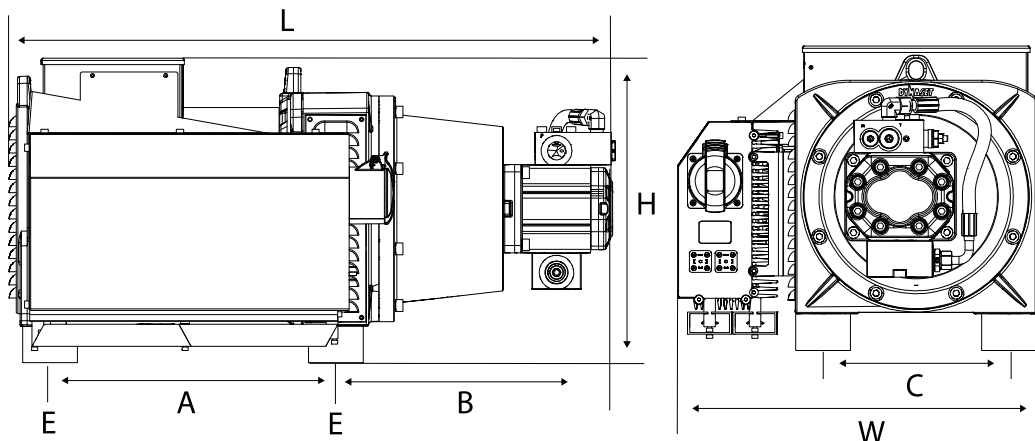
DATA SHEET

HMG/CMG PRO HYDRAULIC MAGNET GENERATOR



HMG/CMG PRO15kW-220VDC-65
HMG/CMG PRO 20kW-220VDC-86

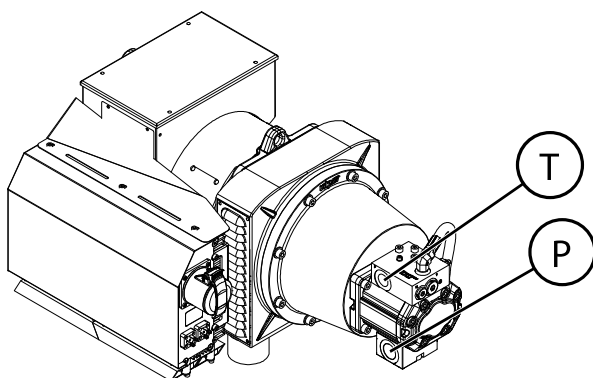
DIMENSIONS



MODEL	DIMENSIONS, mm (in)							WEIGHT
	L	W	H	A	B	C	E	
HMG/CMG PRO 15kW-220VDC-65	828 (32.6)	501 (19.7)	416 (16.4)	390 (15.4)	382 (15.0)	254 (10.0)	M12	145 (320)
HMG/CMG PRO 20kW-220VDC-86	878 (34.6)	511 (20.1)	416 (16.4)	430 (16.9)	393 (15.5)	254 (10.0)	M12	163 (359)

Notice! Measurements may change if optional accessories are installed.

HYDRAULIC PORTS



MODEL	PRESSURE LINE	RETURN LINE
	P	T
HMG/CMG PRO 15kW-220VDC-65	BSB 3/4"	BSB 1"
HMG/CMG PRO 20kW-220VDC-86	BSB 3/4"	BSB 1"

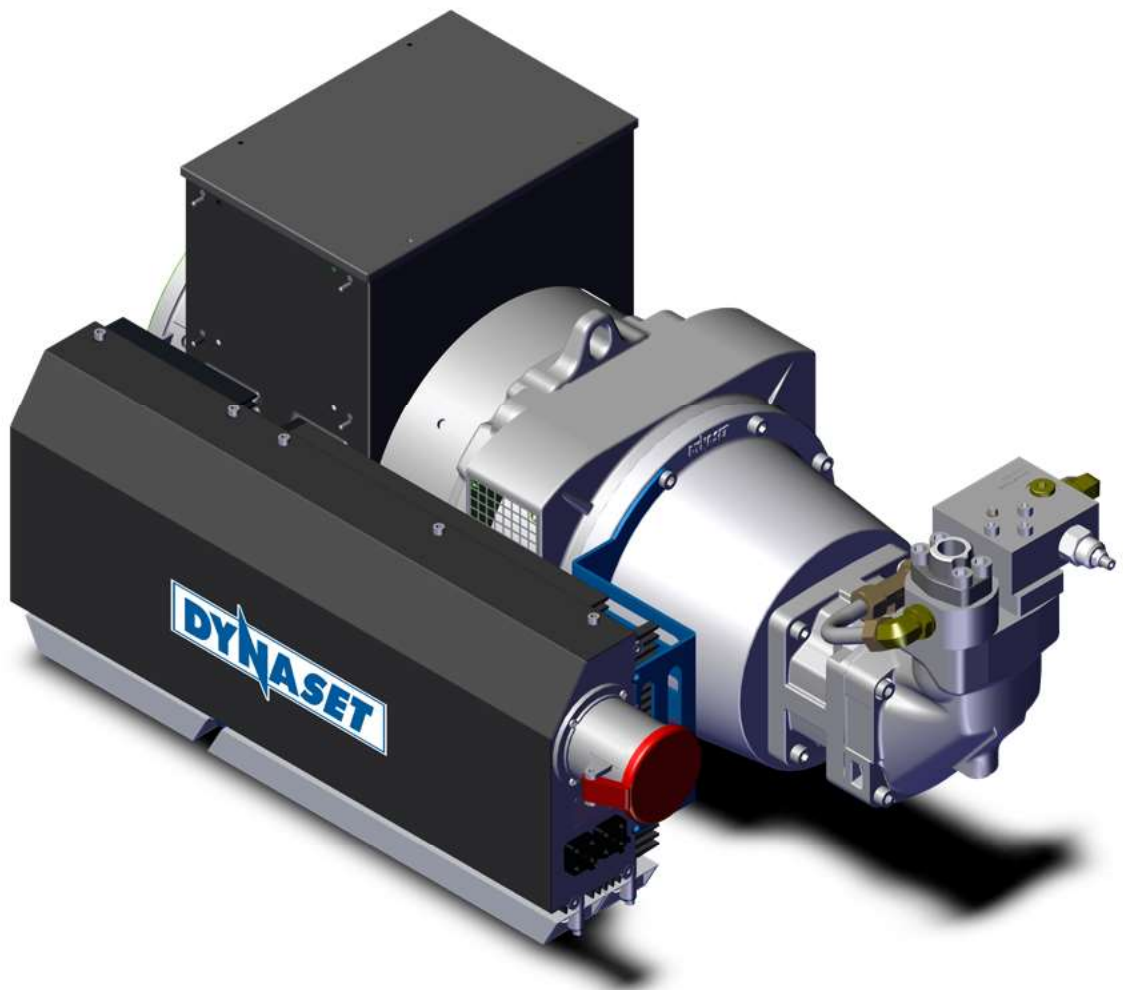
TECHNICAL SPECIFICATIONS

		HMG/CMG PRO 15kW 65	HMG/CMG PRO 20kW 92		
OUTPUT CHARACTERISTICS					
Generator power max.	kW	15	20		
Magnet coil power max.	KW	13,5	18,6		
Magnet coil resistance (20 °C)	Ohm	3,6 -50	2,6 - 50		
Operating voltage	VDC	220±5%			
Auxiliary electricity		Optional			
Operating control voltage	VDC	6 - 32*			
HYDRAULIC POWER REQUIREMENTS					
		HMG PRO	CMG PRO	HMG PRO	CMG PRO
Flow min.	l/min (gpm)	67 (17.7)	67 (17.7)	94 (24.9)	94 (24.9)
Flow max.	l/min (gpm)	95 (25.1)	Flow limited internally	110 (29.0)	Flow limited internally
Pressure at nominal power output	bar (psi)	190 (2750)	190 (2750)	190 (2750)	190 (2750)
Pressure max.	bar (psi)	210 (3000)	350 (5100)	210 (3000)	350 (5100)
Pressure when unloaded	bar (psi)	40 (580)	40 (580)	30 (440)	30 (440)
Return line pressure max.	bar (psi)	5 (73)	5 (73)	5 (73)	5 (73)
HYDRAULIC FLUID REQUIREMENTS					
Viscosity	cSt	10-200 / optimum 25-35			
Temperature	°C (°F)	max. 70 (158)**			
Filter ratio	um	25 or better			
Cooling capacity require- ments	kW	3,6		4,0	

Gallons are U.S. liquid gallons

* Only with HMG PRO

** Depending on the hydraulic fluid.



12/18
rev 1.3

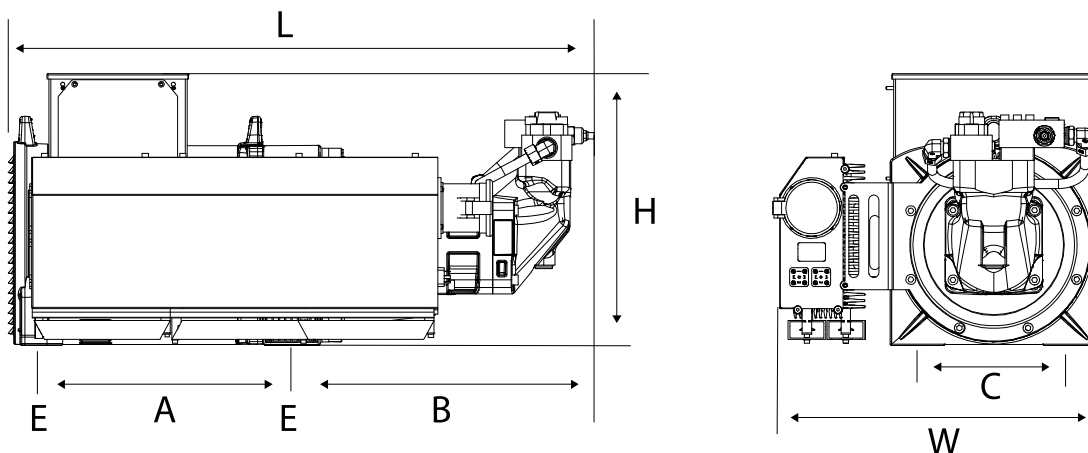
DATA SHEET

HMG/CMG PRO HYDRAULIC MAGNET GENERATOR



HMG/CMG PRO 30kW-220VDC-120
HMG/CMG PRO 40kW-220VDC-165

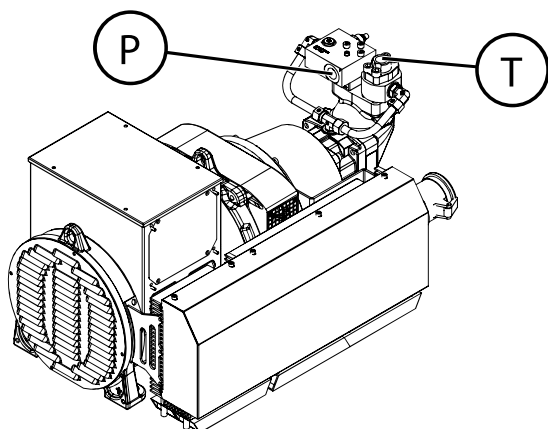
DIMENSIONS



MODEL	DIMENSIONS, mm (in)							WEIGHT	
	L	W	H	A	B	C	D	E	kg (lbs)
HMG/CMG PRO 30kW-220VDC-120	933 (36.7)	515 (20.3)	450 (17.7)	386 (15.2)	482 (19.0)	254 (10.0)	304 (12.0)	M12	175 (386)
HMG/CMG PRO 40kW-220VDC-165	1003 (39.5)	600 (23.6)	600 (23.6)	166 (6.5)	510 (20.1)	340 (13.4)	304 (12.0)	M16	198 (437)

Notice! Measurements may change if optional accessories are installed.

HYDRAULIC PORTS



MODEL	PRESSURE LINE	RETURN LINE
	P	T
HMG/CMG PRO 30kW-220VDC-120	BSB 3/4"	BSB 3/4"
HMG/CMG PRO 40kW-220VDC-165	BSB 3/4"	BSB 3/4"

TECHNICAL SPECIFICATIONS

		HMG/CMG PRO 30kW-220VDC-120	HMG/CMG PRO 40kW-220VDC-165		
OUTPUT CHARACTERISTICS					
Generator power max.	kW	30	40		
Magnet coil power max.	KW	29,5	39,5		
Magnet coil resistance (20 °C)	Ohm	1,8 - 100	1,3 - 100		
Operating voltage	VDC	220±5%			
Auxiliary electricity		Optio			
Operating control voltage	VDC	6 - 32			
HYDRAULIC POWER REQUIREMENTS		HMG PRO	CMG PRO	HMG PRO	CMG PRO
Flow min.	l/min (gpm)	122 (32.2)	122 (32.2)	167 (44.1)	167 (44.1)
Flow max.	l/min (gpm)	140 (37.0)	Flow limited internally	185 (49.0)	Flow limited internally
Pressure at nominal power output	bar (psi)	190 (2750)	190 (2750)	190 (2750)	190 (2750)
Pressure max.	bar (psi)	210 (3000)	350 (5100)	210 (3000)	350 (5100)
Pressure when unloaded	bar (psi)	40 (580)	40 (580)	30 (440)	30 (440)
Return line pressure max.	bar (psi)	5 (73)	5 (73)	5 (73)	5 (73)
HYDRAULIC FLUID REQUIREMENTS					
Viscosity	cSt	100-200 / optimum 25-35			
Temperature	°C (°F)	max. 70 (158)**			
Filter ratio	µm	25 or better			
Cleanliness level	ISO 4406	19/17/14			
Cooling capacity requirements	kW	7,8	8,5		

Gallons are U.S. liquid gallons

* Only with HMG PRO

** Depending on the hydraulic fluid.